

One

SIMPLICITY WITHIN REACH



Direct USB Intra-oral Sensor

The logo for 'owandy' features a stylized orange crown above the lowercase letters 'owandy' in a grey sans-serif font.





THE INTRA-ORAL SENSOR THAT IS ACCESSIBLE AND EASY TO USE



THE CONCENTRATION OF TECHNOLOGY MAKES INTRA-ORAL IMAGING EVEN EASIER



Endodontics



Prosthetic and implant surgery



Periodontics



Caries diagnosis



All in one

Design and ergonomic sensor with leading-edge CMOS technology

Simple

Easy installation: direct USB connection and 3 metre cable

Accessible

Technology at your fingertips

Adaptable

Fits into your practice



All in one

One is an intra-oral sensor equipped with CMOS technology. Its ergonomics and design have been conceived to adapt perfectly to your practice. The rounded corners and bevelled edges of the device provide you and your patient a true ease of positioning.

The comfort in the mouth is optimised by the thinness of the sensor and cable.



ONE Direct USB Intra-oral Sensor

Simple



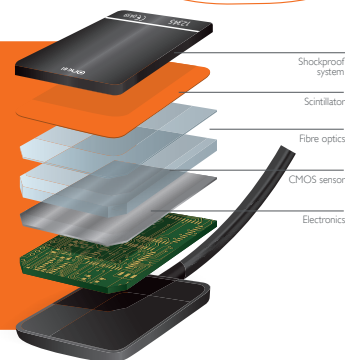
Thanks to its direct USB connection, the **One** sensor is very easy to use in single or multi workstation setups. The length of the cable (3 meters) affords greater flexibility of installation, regardless of the layout of your practice.



Accessible



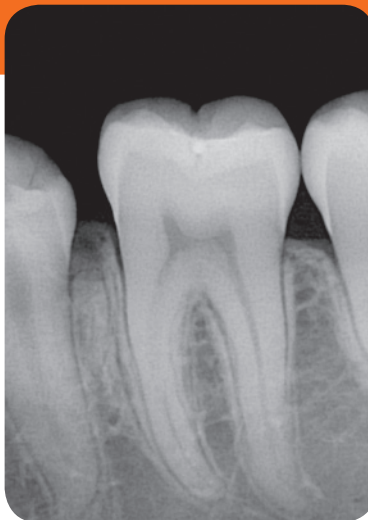
With **One**, you can equip your practice with a device boasting the very latest CMOS technology at a very affordable price. This compact technology (combination of an optical fibre, scintillator and shock absorption system) is the mark of high reliability equipment.



Adaptable



The **One** sensor is available in two sizes (#1 and #2) to suit your working methods (bitewing, retro-alveolar, posterior, etc.) It can be used for periodontics, endodontics, prosthetic and implant surgery and also for the diagnosis of tooth decay.



Finally, the device is completely water-tight. You have a choice of disinfection methods (spraying, dipping and more).



Opteo is the only sensor that is 100% integrated with Quickvision. You can therefore save your images directly in the dental plan of your patient.



ONE
Direct USB
Intra-oral Sensor



Technical Specifications

Sensor technology: CMOS

**External dimensions of the sensor
(Length x width x thickness):**

39 x 25 x 5 mm (#1)

43 x 31 x 5 mm (#2)

Sensitive area:

30 x 20 mm (600mm²) - (#1)

34 x 26 mm (900mm²) - (#2)

Sensitive area in pixels:

1500 x 1000 pixels (#1)

1700 x 1300 pixels (#2)

Length of sensor cable: 3 m

Grayscale: 14-bit (16,384 greyscale levels)

Connection: Standard USB:

USB 2.0 High-Speed (480Mbit/s)
and USB 3.0.

Owandy is an international player and is renowned for manufacturing dental imaging solutions and developing imaging and practice management software. Its software is used by around half of the dental practitioners in France today and its range of digital imaging solutions is available to dentists in more than 50 countries worldwide. In addition to its range of products and services, **Owandy** strives to contribute to the improvement of orodental health and the well being of patients. A committed and innovative company, **Owandy** has been the preferred partner for dentists for over 20 years.

Dealer's stamp

Owandy

Le Coruscant - 2, rue des Vieilles Vignes

77183 Croissy-Beaubourg

FRANCE

Tel : +33 (0)1 64 11 18 18

Fax : +33 (0)1 64 11 18 10

Email : info@owandy.com

www.owandy.com

 **owandy**

SOFTWARE

DIGITAL SENSORS

PANORAMIC (2D and 3D).

INTRAORAL RADIOLOGY

CAMERAS