



**vISTEO**  
WELCOME TO A WORLD OF INNOVATION



# A revolution in dental imaging

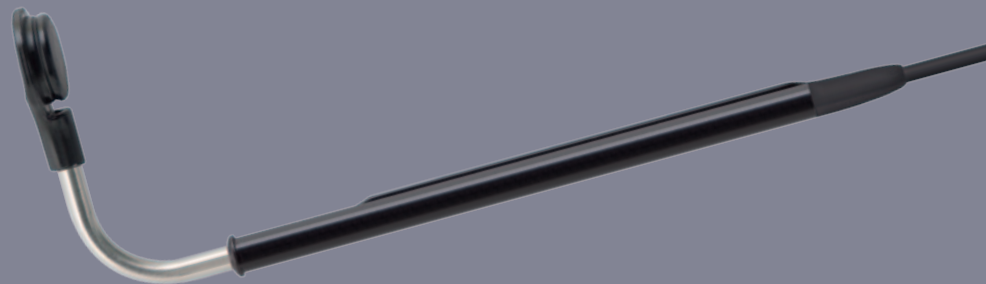
## The liberated sensor

### **VISTEO IS A NEW CONCEPT IN DENTAL RADIOGRAPHY:**

A unique set, sensor, control box and universal angulator with transmission by induction. It now provides the practitioner with all the study possibilities of radiological imaging.



It is the latest wireless intra-oral sensor to combine freedom of movement with ease of diagnosis.

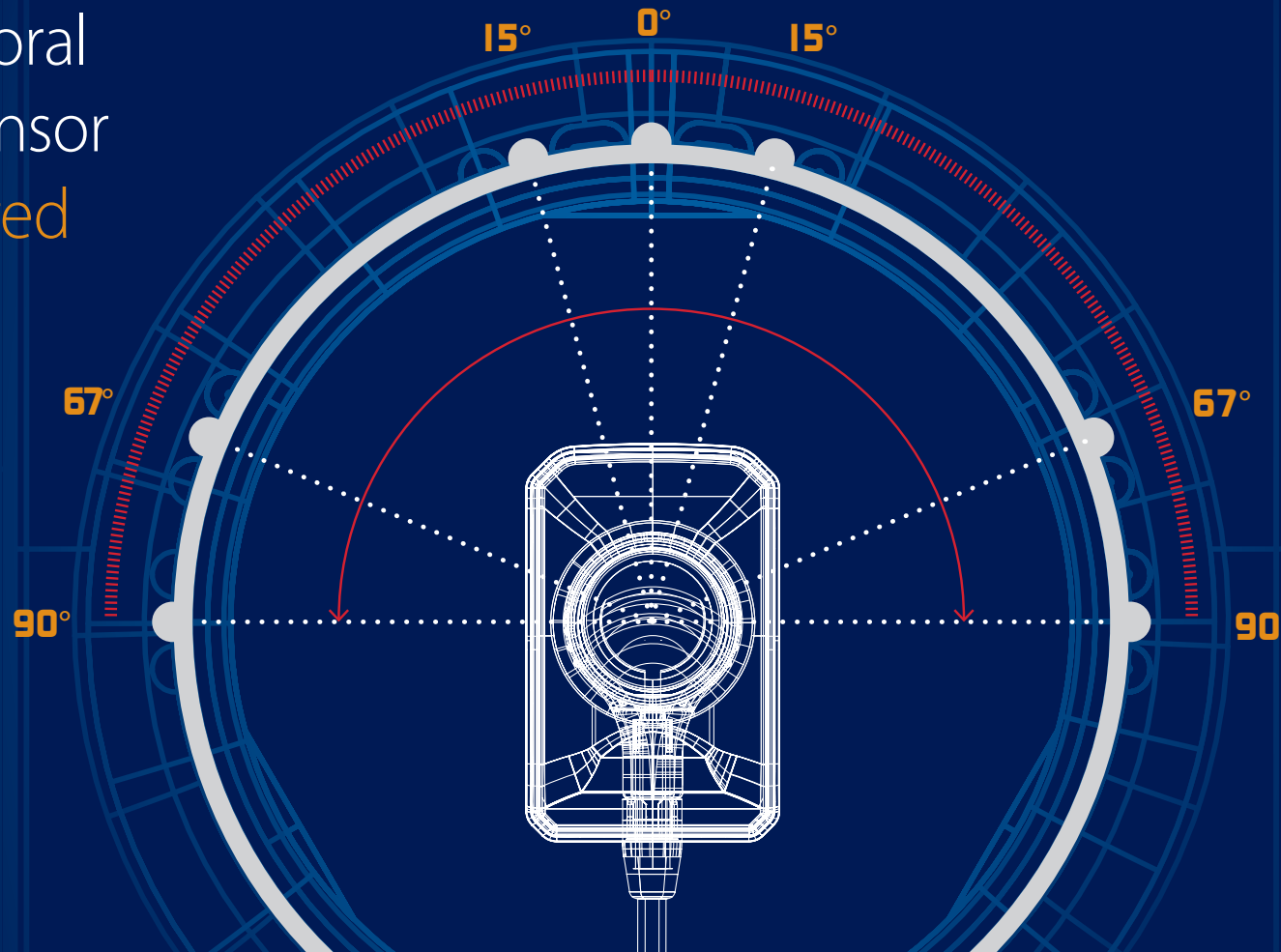


**VISTEO**  
owandy



# The 1<sup>st</sup> intra-oral induction sensor with integrated positioning

- Immediate selection of the sensor's position
- 7 predefined positions or free angulation
- Parallel positioning or positioning with the bisecting technique



An integrated, universal sensor-angulator with an infinite number of positions

Notched, snap-fit head: a major innovation which simplifies image acquisition

- Versatile use of the angulator or the direct sensor cable

*- Visteo combines all types of angulators into one single positioner and enables the acquisition of all types of images: peri-apical, posterior, bitewing, endo.*



*- The rigid angulator ensures a stable parallel positioning*

The angulator rotation covers all image acquisition requirements. It offers standard (predefined) positions and the possibility to freely use other positions with stability.

# A single tool for all your intra-oral radio-diagnostic needs



## Transmission by induction

The sensors – size 1 or size 2 – snap on to the angulator's connector. The selected sensor is then instantaneously connected and operational through induction, a unique system patented by Owandu.



## Health and safety

Integration of the cable in the angulator optimises the hygiene of the device.

Being connected by induction, the sensor is independent. As there is no wire to disturb the placement in the mouth, any contamination problem is eliminated.

The transmission of data from the sensor to the angulator is done without any point of contact. The head transmits the sensor data by induction.

## Two biteblocks for the comfort of your patients



Being clipped on the angulator, each of the interchangeable biteblocks allows a stable positioning of the jaw during image acquisition.



## Stainless steel angulator to protect the connection cable

The transmission cable, traditionally sensible to the patients' mouth is now protected in a stainless steel tube, itself integrated in the angulator. With this system, the cable disappears.







**Visteo**  
Wireless positioning  
concept

# Practitioner and patient are entering a new care practice



The Visteo concept  
is a valuable  
contribution to the  
practice's image.

It strengthens the  
trust shared with  
patients.



## Moving with the times

Staying in contact  
with your patients  
to prepare image  
acquisition and  
only using a single  
angulator saves you  
valuable time.

Thanks to the  
Visteo concept,  
the comfort  
for patient and  
practitioner is  
improved.



*- The clip  
system common  
to all Visteo  
sensor kits, gives  
the practitioner  
freedom of  
movement.*

# Mobility and sharing

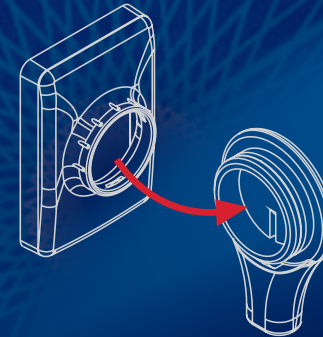
## Stay in contact with your patients



### A change within reach

The new snap-on system to attach sensors to the angulator provides great ease of use.

It is instantaneous, convenient, ergonomic and offers the advantage of selecting the angle for the image acquisition at a touch.



### Visteo, compact and shareable

Light and convenient, with reduced dimensions for ease of handling by the practitioner, the Visteo control box is the same one for both types of sensor (T1 and T2).



The same control box is used on several chairs in shared mode.



### There's a sensor for everyone!

Customisable control box for multi-chair use.

### T1 & T2 interchangeable sensors



Surprisingly compact for easy daily use, Visteo sensors come in two sizes of sensitive surface: T1 = 600 mm<sup>2</sup> and T2 = 900 mm<sup>2</sup> (active areas).



# Visteo

## Ease of use and high definition

### PRECISION, READABILITY, ADAPTABILITY: DECISIVE ADVANTAGES

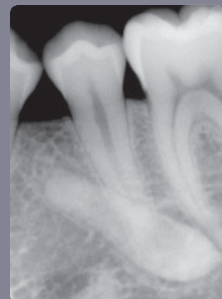
With a very high definition >20 lp/mm, Visteo sensors reflect the very latest advances in digital technology (CMOS).

Practical and effective, Visteo is universal and replaces every other complex positioning system for all diagnostic cases:

- For endodontics, in vertical mode with integral retroalveolar images.
- In horizontal mode in "Bitewing" format to display with ease up to 4 teeth (with the Size 2 sensor).
- Result: simpler to use, easier diagnostics.



- Created by Owandy, Visteo sensors are perfectly integrated with the QuickVision imaging software.



### 100% Owandy diagnostics

Visualise directly the rotation of the sensor during the selected image acquisition and exploit all the treatment and diagnostic possibilities of the Owandy software.



- Preview the sensor rotation in the Owandy software.







### T1 - T2 sensors

- Technology: CMOS (induction) technology
- Theoretical resolution: 25 lp/mm (T1 & T2)
- Real resolution: >20 lp/mm (T1 & T2)
- Sensitive area: 20 x 30 mm ( $\pm 600 \text{ mm}^2$ ) (T1)  
26 x 34 mm ( $\pm 900 \text{ mm}^2$ ) (T2)
- CMOS Matrix: 1000 x 1500 (T1)  
1300 x 1700 (T2)
- Pixel size: 20 x 20  $\mu\text{m}$  (T1 & T2)
- External dimensions: 24,9 mm x 38,9 mm (T1)  
30,9 mm x 42,9 mm (T2)

### Visteo connection box

- External dimensions: 13,8 x 4,6 cm x 1,7 cm
- Connection: USB 2.0 compatible USB 1

### Visteo Connection box & sensors

- CE compliant: Directive CE 93/42
- Standards: EN 60601-1 (medical appliance safety)  
EN 60601-1-2 (electromagnetic compatibility)

### A REVOLUTION IN YOUR DAILY PRACTICE:

- A single angulator with reduced dimensions
- CMOS induction sensor
- Connection integrated in the angulator
- Ergonomic biteblocks
- Ease of hygiene
- Compact Easy Clip control box
- All types of radiological examinations
- Sharing of sensors (T1 & T2)
- 100% integrated with QuickVision software

### Effectiveness in simplicity

An all-in-one solution to save the managing of accessories, storage space and manipulation time.



### Owandy

6, allée Kepler  
77420 Champs sur Marne  
France  
Tel: +33 (0)1 64 11 18 18  
Fax: +33 (0)1 64 11 18 10  
Email: [export@owandy.com](mailto:export@owandy.com)  
[www.owandy.com](http://www.owandy.com)

### DIGITAL SENSORS

PANORAMIC UNITS  
CAMERAS  
RADIOLOGICAL EQUIPMENT  
SOFTWARE